



EFI SeeSequence Compose

Intuitive Tools that Make Advanced Document Preparation Simple

EFI® SeeSequence Compose is a commanding software application option designed to be the core toolset for operators to prepare documents for printing. It provides centralised document assembly, WYSIWYG page-level ticketing, preview and editing features.

Intuitive, Accurate Document Preparation Capabilities

EFI SeeSequence Compose provides Fieri® with an advanced preview and editing environment. Its wide range of sophisticated document composition tools and advanced WYSIWYG user interface improve document verification, speed up composition, and enable less experienced operators to perform complex document functions.

Since SeeSequence Compose launches from EFI Command WorkStation® 5, it's flexible enough to run on the user's desktop or locally at the Fieri.

In addition, sophisticated tools with familiar Fieri-inspired user interfaces reduce training requirements and increase the operator's resource base.

From a single, integrated window, operators manage tabs and specify mixed media, taking advantage of the fully automated digital printing process to produce finished documents with minimal operator intervention.

Integration with the Paper Catalog's centralised paper warehouse database also makes it intuitive for operators to apply media specifications on a per-page or chapter basis and improves paper management across the entire production environment.

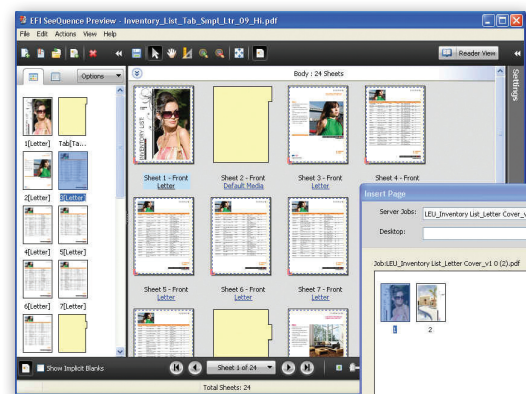
Flexible Document Assembly

Users can drag and drop files from the desktop and selected pages from jobs anywhere on the network or from the Fieri job list.

Maximise your Profits with EFI SeeSequence Suite

Operators can use a unique working space for all document layout tasks by adding the EFI SeeSequence Impose Option. With it, customers can incorporate visual and intuitive document imposition.

SeeSequence Impose and SeeSequence Compose work together to simplify labor intensive document preparation activities to shorten job set up times of even the most complex jobs.



SeeSequence Compose allows operators to drag and drop pages into jobs easily.



Operators can preview jobs in a Reader View mode before committing to print.



EFI SeeSequence Compose

EFI's portfolio of integrated solutions increases productivity and improves your bottom line. Find out more at www.efi.com.

Professional Tools for Advanced Document Preparation Functions

EFI SeeSequence Compose provides centralised document assembly, WYSIWYG PDF preview and editing.

Functionality includes:

Page View: Simplifies document set-up and navigation in large jobs. Enables users to view entire documents including inserts, tabs, and chapter starts and visually confirms media colour information.

Page-level Ticketing: Processes complex documents with a WYSIWYG job display, decreasing potential for error.

Chapter Definition: Offers quick and easy set-up of page ranges within documents and application of media attributes for page ranges.

Preview Modes: Reviews different page layout output modes and verifies complex document pages quickly, easily and accurately.

Tab Printing: Provides intuitive tab printing functionality, allowing tabs to be inserted, added or removed. Offers WYSIWYG editing of tab text. Manages up to 100 tabs and tab banks up to 15 cuts.

Direct PDF Insertion: Provides simple merging of PDF pages within documents or between documents.

Late Stage PDF Editing: Integrates Enfocus Pitstop and Adobe® Acrobat® for quick and easy last-minute PDF changes.

EFI SeeSequence Compose supports the following

Fiery job formats:

- PDF
- PS
- VDP

System Requirements

- Fiery System 6 or higher
- EFI Command WorkStation v5.0 or higher

Client Station (Minimum)

Mac OS

- PowerPC® G5 or multicore Intel® processor
- Mac OS X v10.4.9 and 10.5
- 1 GB of RAM or more recommended
- 5 GB of available hard-drive space
- 17" monitor, 16-bit colour, 1,024 x 768 resolution

Windows

- Pentium 4, 1 GHz or faster processor
- Microsoft® Windows® XP or Windows Vista®
- 1 GB of RAM or more recommended
- 5 GB of available hard-drive space
- 17" monitor, 16-bit colour, 1,024 x 768 resolution



EFI B.V.
Boeing Avenue 201-207
1119 PD Schiphol-Rijk
The Netherlands
+31 [0]20 658 8000 tel
+31 [0]20 658 8001 fax
www.efi.com

Auto-Count, Bliss, Changing the Way the World Prints, ColorWise, Command WorkStation, DocBuilder, DocBuilder Pro, DocStream, EDOX, EFI, Fiery, the Fiery logo, Fiery Driven, the Fiery Driven logo, OneFlow, PrinterSite, PrintFlow, PrintMe, PrintSmith Site, Prograph, Proteus, RIP-While-Print, Setting the Standard in Digital Printing, Ultrav and VUTEk are registered trademarks of Electronics For Imaging, Inc. in the U.S. Patent and Trademark Office and/or certain other foreign jurisdictions. Bestcolor is a registered trademark of Electronics For Imaging GmbH in the U.S. Patent and Trademark Office. AutoCal, Balance, BioVu, BioWare, Build, ColorCal, Digital StoreFront, Estimate, Fiery Link, Fiery Prints, Fiery Spark, FreeForm, Hagen, JetTrion, Logic, MicroPress, PhotoXposure, Printcafe, PrintSmith, PSI, PSI Flexo, Remoteproof, RIPChips, Scan, Screenproof, SendMe, Splash, Spot-On, UltraTex, UV Series 50, VisualCal, WebTools, the EFI logo, the Fiery Prints logo and Essential to Print are trademarks of Electronics For Imaging, Inc. Best, the Best logo, Colorproof, PhotoXposure, Remoteproof, and Screenproof are trademarks of Electronics For Imaging GmbH. All other terms and product names may be trademarks or registered trademarks of their respective owners, and are hereby acknowledged.

© 2009 Electronics for Imaging

Server and Controller Solutions

U001.01.09_UK