

Secure Printing

Control the output of sensitive documents

At some point, everybody needs to print a confidential document. In the past, this has been an excuse to buy and use a local printer, as users are reluctant to print sensitive documents to a shared network device. Unfortunately, once a local printer is on the user's desk, it is used for all printing rather than just that of a sensitive nature, leading to an increase in costs.

uniFLOW's secure printing functionality allows all users to send their sensitive documents to network printers and to have the job printed only when they are physically standing in front of the device. The user can walk to any device on the network and choose for the job to be printed immediately. This could be a device on a different floor, building, city or country. Due to uniFLOW's Universal Printer Driver technology, it does not matter which model of device the user decides to release the job to, as they can be sure that the job will be printed exactly as expected. Users can submit jobs to the secure print queue either on the local network or via the internet, removing the need for printer drivers to be installed on the user's computer¹.

The user can be identified at the device by their fingerprints², PIN number, username and password³, magnetic swipe card, smart card or proximity card. Once authenticated, the user can view and select their jobs directly on the MFD screen³. The user can see a thumbnail of the first page of the job^{4,5} and change the finishing options, such as double sided, staple and colour, before it is printed⁵. When the job is printed, the print job costs can be stored for later reporting purposes⁶. If the job is no longer required, the user can choose to delete the job rather than print it, with the savings¹ this has made stored in the database.

As well as providing security for printing on network devices, the secure printing module can reduce print waste and create cost savings. For example, in most organisations hundreds of pages are thrown away from printer output trays that have never been collected by the users. The Secure Printing module can be configured to automatically delete any job that the user has sent to the printer and that they do not pick up in a reasonable time. Any jobs that are deleted without being printed are stored in the database as a cost saving⁶, which can then be used to show the return on investment made by uniFLOW.

Advantages of using uniFLOW

- ❑ An integrated solution with functions including print/copy accounting, secure printing, job routing and document capture
- ❑ A modular system allowing it to be configured specifically to address the needs of your business

Advantages of using the Secure Printing module

- ❑ Keeps network print jobs confidential
- ❑ Jobs will follow the user to the device regardless of model or location
- ❑ Allows the user to change the print settings of the job before it is released⁵
- ❑ Allows the use of multiple identification methods including proximity cards, smart cards and fingerprints²
- ❑ Removes the need for expensive local printers
- ❑ Reduces print waste and costs by only releasing the jobs that the user actually needs
- ❑ Shows return on investment made by new printing strategy

¹ Features require the Internet Gateway Module

² Features require the Biometric module

³ Features require a uniFLOW SPP Device Licence for MEAP or uniFLOW SPP device License for non-Canon MFD

⁴ Features require a Job Conversion Instance

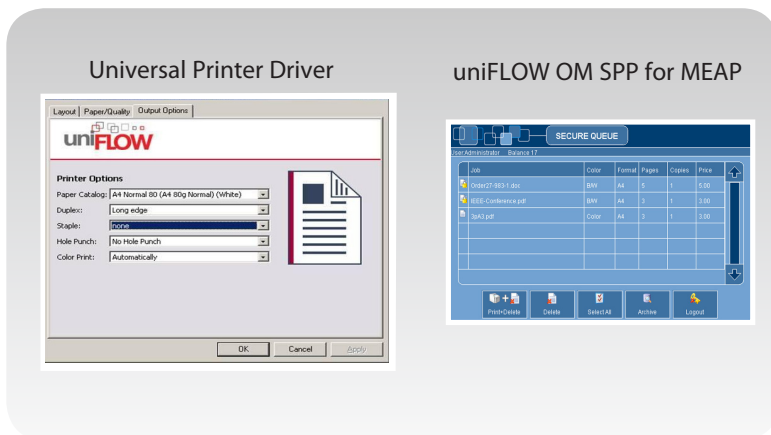
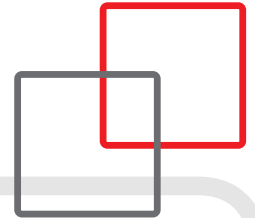
⁵ Features require a uniFLOW SPP Device Licence for MEAP

⁶ Features require the Statistics Module

⁷ Features require a uniFLOW Login Device Licence for CMFP

Secure Printing

Control the output of sensitive documents



Secure Printing functionality

- Holds print jobs on the server and releases them only after user identification at the output device
- Identification possible by entering a code, username and password, fingerprint², or by using various smart, proximity or magnetic swipe cards
- Jobs can be released to any device, regardless of manufacturer
- Ability to link any number of uniFLOW servers to create a global print job release mechanism
- Ability for users to submit jobs to the secure print queue via the internet¹
- Ability for the user to view a list of their secure jobs on the MFD panel and release or delete them³
- Ability to see number and price of waiting jobs before release on non-MEAP enabled Canon imageRUNNER devices
- Ability for the user to change finishing options of their jobs when used with the Universal Driver⁵
- Option to set all jobs to be released on user identification
- Central release queue where print jobs can be selected for release or deleted via a web browser
- Central release queue allows users to place jobs on “hold” in situations where all jobs are released upon identification
- Ability for the user to select and release public jobs from a document archive⁵

uniFLOW required software

- ❑ uniFLOW Base License (WE, BE, CE, EE)
- ❑ The secure printing features requires the Secure Printing module

Compatibility

- ❑ The uniFLOW SPP Device License for MEAP requires a MEAP enabled Canon iR or imageRUNNER Advance device
- ❑ The uniFLOW SPP Device License for non-Canon devices requires a compatible device
- ❑ The uniFLOW Login Device License for CMFP requires a compatible Canon non-MEAP imageRUNNER device

Universal Driver supported devices

- ❑ All Canon MFD's and Canon Single Function Printers (LBPs)
- ❑ Any PCL5, PCL6 or Postscript printers are expected to work
- ❑ Visit <http://difportal.nt-ware.net/> for the latest supported device information

Software Operating System uniFLOW server

- ❑ Windows 2000/2003/2008
- ❑ Internet Information Server 5.0 (2000), 6.0 (2003), 7.0 (2008)
- ❑ Internet Explorer 5.5 or higher (Internet Explorer 7 recommended)