



P5 Synchronize

Replicate data to ensure high availability.



P5 Backup

Back up server data to disk and tape.



P5 Backup2Go

Back up desktop and laptop data to disk.



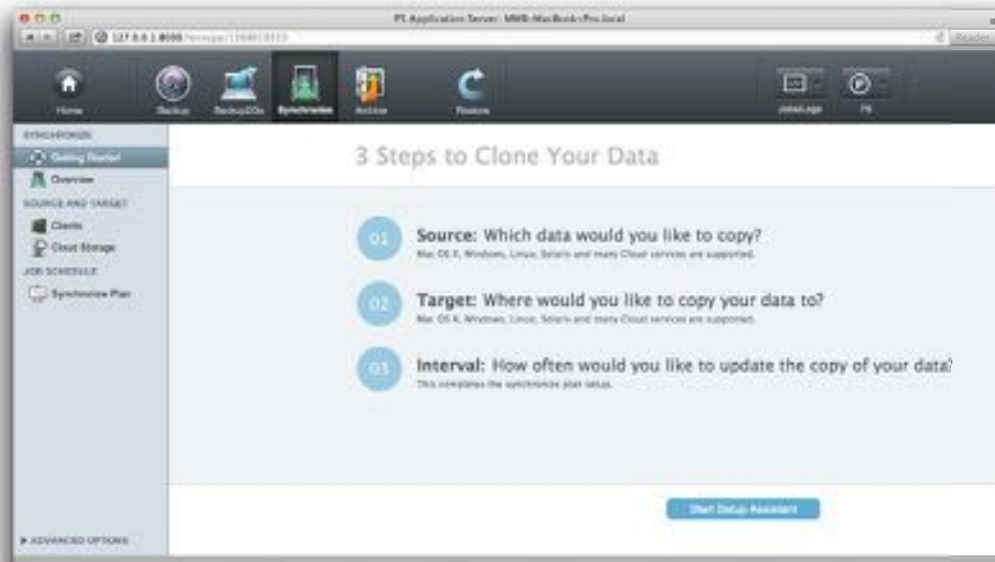
P5 Archive

Move or migrate data offline to disk and tape.





ARCHIWARE P5 SYNCHRONIZE



Archware P5 Synchronize is the simple solution for data availability. Servers RAIDs or SANs are cloned and immediately accessible as fail-over.

Easy administration – maximum automation

With Archware's browser interface a synchronization is set up within minutes. Minimum administration helps to reduce configuration. Xsan and FS events support lets you create optimized workflows. Even the biggest storage setups can now be saved easily.

Security and availability

Increasing data security

P5 Synchronize recognizes and copies modified files automatically. Continuous Data Protection reduces the risk of data loss.

Maximum availability & fail-over

Synchronized files are immediately available. No restore is required. In case of emergency, production can continue immediately using the clone data.

High Availability/Failover
P5 Synchronize

Cloned Data

- ✓ Immediate Access/Failover
- ✓ Versions & Snapshots
- ✓ FSEvents
- ✓ Xsan, metaSan, SAN

■ Xsan cloning ■ Great efficiency
■ High availability ■ New workflows



ARCHIWARE P5 SYNCHRONIZE



Maximum efficiency

Filters

Archiware's filters can easily be used to include or exclude files from synchronization, you can synchronize only selected files, e.g. excluding mp3 files.

Efficient use of storage resources

Identical files can be linked instead of copied. Snapshots and hard links enable an efficient utilization of storage capacities.

File Versions

P5 can keep multiple versions of files. Previous versions are available in addition to the clone. Snapshots of the whole file system can keep even more data available.

Update mode copies only new and modified files. Required disk space and network traffic is reduced.

Extended workflows

Data distribution world-wide

P5 Synchronize distributes data automatically to different locations. A clone of your data set can be distributed to partners, branches or agencies easily.

Cloud Support

Data can be synced to, from and in between cloud services. Archiware's own free tool WingFS provides the connection to the services. As desktop tool it allows drag & drop operations with cloud services.

Data migration – the easy way

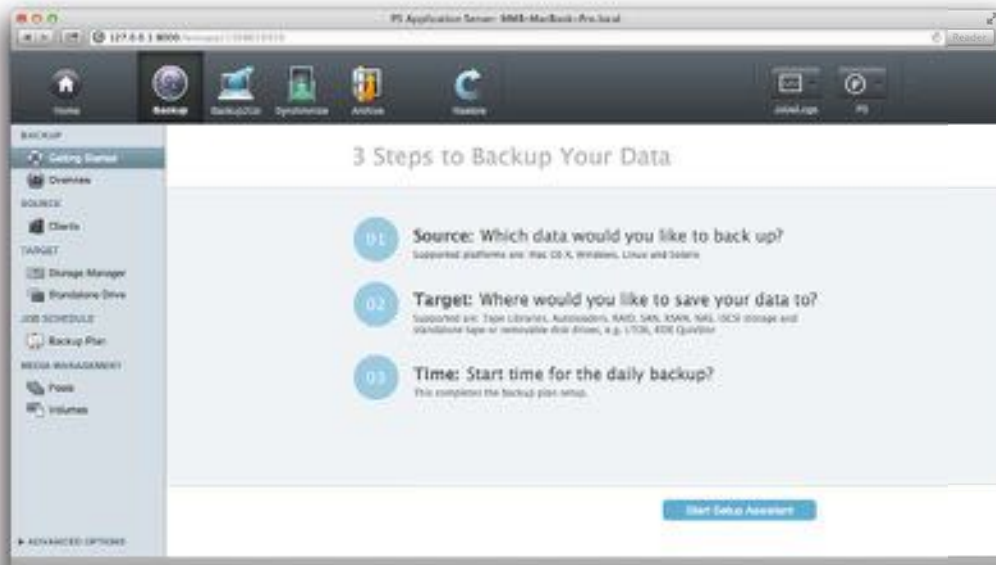
With P5 Synchronize, data migrations, even between heterogeneous systems, can be done within the shortest possible time frame. After synchronization, files can be deleted automatically from the source.

ARCHIWARE P5

Operating system requirements	Hardware requirements
Mac OS X	Memory
Intel 10.5+	1 GB+
Windows	Hard disk
Server 2008R2/2012, Windows 7/8 as Backup2Go Server: Windows 2008R and Windows 7	200 MB for Installation + variable (for backup/archive indexes)
Linux	Browser requirements
Kernel 2.6.4+ (x86) 32bit or 64bit with 32bit libs For FS-events with inotify, kernel 2.6.13+ required as Backup2Go Server: Btrfs 0.19+	Safari 5.1+, FireFox 3.5+, Chrome 4+, Internet Explorer 9+
Solaris	
Sparc Solaris 2.8+, x86 Solaris 2.10+ Note: The language package Unicode UTF-8 is required.	
Virtualization	
x86 – VMware, Parallels, Xen, Hyper-V	



ARCHIWARE P5 BACKUP



Archware P5 Backup is the automatic, high-performance backup and restore solution for saving data to tape or disk.

Easy Administration. Anyplace. Anytime.

Archware's browser-based interface enables fast and simple configuration, administration and monitoring – independent of your location. With the new setup assistants the first backup can be setup and run within minutes.

User Restore

The administrator can give user rights to search, browse and/or restore from backup

Security and reliability

Maximum Security

To ensure maximum data security, a backup clone on a second tape can be created for offsite storage and disaster prevention. Encryption options protect your data during transfer and on the media.

Interruptible Backup

Interruptions will be filled in automatically with the next run. All partial backups are restorable.

Server Backup to Disk and Tape
P5 Backup

Nearline and Offline Backup

- ✓ Versions & Snapshots
- ✓ Interruptible Backup
- ✓ User Restore
- ✓ Long Retention & Offsite Storage

■ Maximum security	■ Maximum speed
■ Minimum Administration	■ Full flexibility



ARCHIWARE P5 BACKUP



Maximum speed

Maximum performance through Parallelization

P5 Backup supports multiple drives, tasks and clients simultaneously. Large data sets can be backed up in the shortest time possible.

Quick restore: Block positioning

Archiware's block-direct positioning allows for fast restore because no sequential seeking takes place on the medium.

Full flexibility

Platform independence

Your data can be restored on any platform since Archiware stores it in a platform neutral format.

Scalable & modular design: Growing with your requirements

There are no limits on possible growth. You can add further Archiware products, hardware, media etc. at any time.

ARCHIWARE P5

Operating system requirements	Hardware requirements
Mac OS X	Memory
Intel 10.5+	1 GB+
Windows	Hard disk
Server 2008R2/2012, Windows 7/8 as Backup2Go Server: Windows 2008R and Windows 7	200 MB for Installation + variable (for backup/archive indexes)
Linux	Browser requirements
Kernel 2.6.4+ (x86) 32bit or 64bit with 32bit libs For FS-events with inotify, kernel 2.6.13+ required as Backup2Go Server: Btrfs 0.19+	Safari 5.1+, FireFox 3.5+, Chrome 4+, Internet Explorer 9+
Solaris	
Sparc Solaris 2.8+, x86 Solaris 2.10+ Note: The language package Unicode UTF-8 is required.	
Virtualization	
x86 – VMware, Parallels, Xen, Hyper-V	



ARCHIWARE P5 BACKUP2GO



Archiware P5 Backup2Go offers a reliable, secure and efficient backup for laptops and workstations – regardless of their location. You could be in the office, on the road or at home!

Backup for Workstations

Efficiency: Client-triggered backup

P5 lets the laptop initiate its own backup as soon as a connection to the server can be established. Both server and network are used most efficiently.

Reliability: Full backup interruptions accepted

P5 Backup2Go tolerates interruptions during the backup process. If a workstation or laptop is shut down or loses the network connection, the backup process resumes automatically as soon as it is online again. Partial backups are fully functional.

Zero Administration

P5 Backup2Go can be installed and used within minutes and is ready to save your data automatically. Workstation templates allow administrators to define and customize backup for any given workstation or groups of workstations. Scalability is easy since one template can be used by 10, 100 or more workstations.

Workstation Backup
P5 Backup2Go

Online Backup

- ✓ Zero Administration
- ✓ Invisible in Background
- ✓ From anywhere
- ✓ User Restore & Timeline
- ✓ 10-100s Workstations

| Zero Administration | Central control
 | High efficiency | User Restore

Flexible automatic backup

Backups start automatically even after longer breaks. No special adjustments are necessary e.g. for vacations.



ARCHIWARE P5 BACKUP2GO



Restore

Simple, fast restore – both for administrators and users

The intuitive browser-based interface, lets you restore with a few mouse clicks. Optionally the administrator can allow users to restore their own data.

A time machine for your data

The backup index is displayed as time line. Users can view their file's history and retrieve a version backed up days, weeks or months before.

Administration

Backup Template Parameters

Administrators can establish or allow users to define certain parameters.

Configuration parameters

- Filter
- Backup interval
- Encryption
- Data compression
- Bandwidth limit

- Data retention
- User restore
- CPU throttle
- Maximum user per template

Comfort

Backup increments: Minimal server and network load

Since files are continuously backed up, even during long out-of-office periods, the volume of data for each backup increment remains small. Hence, network and server loads are kept to a minimum.

Invisible solution

P5 Backup2Go runs invisibly in the background while you work. Administrators can limit network bandwidth and CPU use to match needs of other tasks.

Security

Encryption for security

Files can be encrypted during transfer over a network and/or on the storage media. In addition, Archiware also backs up access rights and ACLs of a file.

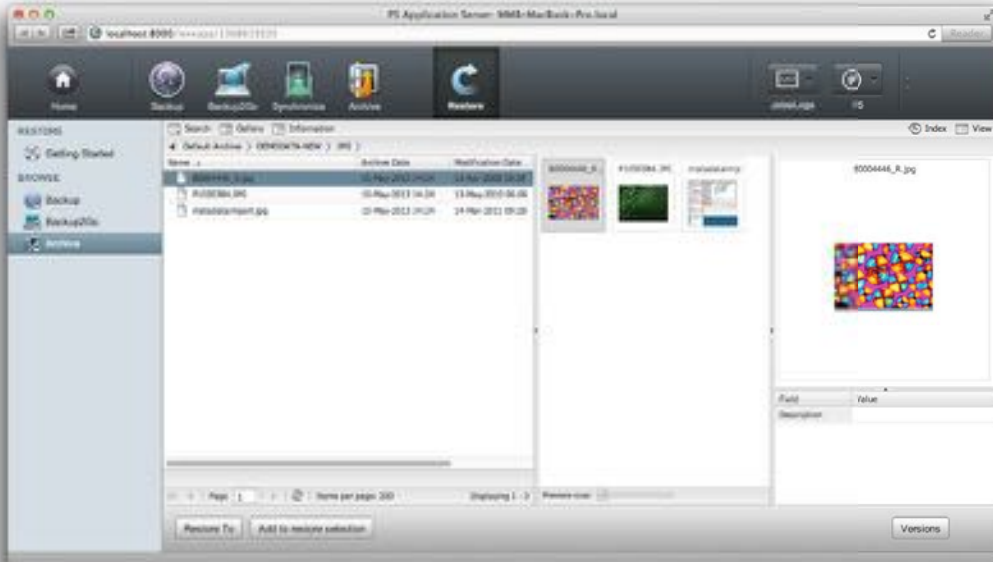
This protects files against unauthorized access after restore. Access to view a workstation's index of saved files is managed via group-based access rights.

ARCHIWARE P5

Operating system requirements	Hardware requirements
Mac OS X	Memory
Intel 10.5+	1 GB+
Windows	Hard disk
Server 2008R2/2012, Windows 7/8 as Backup2Go Server: Windows 2008R and Windows 7	200 MB for Installation + variable (for backup/archive indexes)
Linux	Browser requirements
Kernel 2.6.4+ (x86) 32bit or 64bit with 32bit libs For FS-events with inotify, kernel 2.6.13+ required as Backup2Go Server: Btrfs 0.19+	Safari 5.1+, FireFox 3.5+, Chrome 4+, Internet Explorer 9+
Solaris	
Sparc Solaris 2.8+, x86 Solaris 2.10+ Note: The language package Unicode UTF-8 is required.	
Virtualization	
x86 – VMware, Parallels, Xen, Hyper-V	



ARCHIWARE P5 ARCHIVE



Archware P5 Archive is the clear & easy solution for long-term storage. It offers extendable metadata fields and Quicktime previews for effective search and retrieval.

Maximum automation. Easy administration.

P5 Archive can monitor files, folders and the directory structure to archive files automatically. Fine-grained filtering may be applied to select or exclude files based on name, size, date etc. Within minutes an archive can be configured and running. The browser-based interface enables fast and easy configuration, administration and monitoring – independent of your location. With an excellent price/performance ratio, this results in a considerable relief on your work and resources.

Security and reliability

Unparalleled security

P5 Archive provides maximum data security. Data can be cloned to a second tape for offsite storage. Encryption options protect data against non authorized access both during the transfer and on the media itself.

Migrate Data Offline to Tape/Disk
P5 Archive

- ✓ Previews & Metadata
- ✓ Browse & Search
- ✓ User Restore
- ✓ Offsite Storage
- ✓ Video Archive

- More security
- Easy search

- Free storage
- Full flexibility

Data migration

P5 Archive helps to move data to cost effective tape media. In the process, expensive server storage can be reclaimed while backup times are reduced. Quality of service and productivity increase for users and administrators.

By relieving your network of traffic and your stage of files, you get a better working experience and increased productivity.



ARCHIWARE P5 ARCHIVE



Comfort for admins and end user

Simple, user-friendly search: Quick access to your files P5 Archive offers extensible meta data fields. Quicktime previews of files like PDF, images and video simplify browse and search.

Search & Restore for users

P5 Archive provides configurable login areas for restricted or direct access to (selected) parts of the archive to browse, search and restore files.

LTFS Export Option

For data transport files from the Archive can be exported on LTFS formatted tapes. These tapes can be read with free drivers from drive vendors as well as with Archiware's own tool MediaLTFS (for Mac OS X).

Incremental Archive

As a new feature data can now be archived in incremental mode. This way only new and changed files will be archived effectively minimizing the growth of the Archive.

Full flexibility

Platform independence

You can restore data on any platform since P5 stores it in a platform neutral format.

Scalable & modular design:

Growing with your requirements

Archiware P5 modular design allows optimal adaptation to growing requirements. There are no limits on possible growth. You can add further Archiware products, hardware, media etc. smoothly.

ARCHIWARE P5

Operating system requirements	Hardware requirements
Mac OS X	Memory
Intel 10.5+	1 GB+
Windows	Hard disk
Server 2008R2/2012, Windows 7/8 as Backup2Go Server: Windows 2008R and Windows 7	200 MB for Installation + variable (for backup/archive indexes)
Linux	Browser requirements
Kernel 2.6.4+ (x86) 32bit or 64bit with 32bit libs For FS-events with inotify, kernel 2.6.13+ required as Backup2Go Server: Btrfs 0.19+	Safari 5.1+, FireFox 3.5+, Chrome 4+, Internet Explorer 9+
Solaris	
Sparc Solaris 2.8+, x86 Solaris 2.10+ Note: The language package Unicode UTF-8 is required.	
Virtualization	
x86 – VMware, Parallels, Xen, Hyper-V	