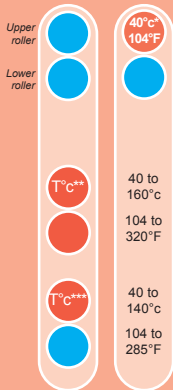


Atlantic 1080 Laminating systems are ideal for printing and finishing companies who want to do quality, mass production. Space saver, Atlantic 1080 completes perfectly the 91 (36") and 112 cm (44") wide printers.

Temperature control



Pressure sensitive films :

- Lamination, encapsulation, adhesive setting, mounting
- *40°C (104°F) recommended temperature for optimised results with cold films

Thermal films :

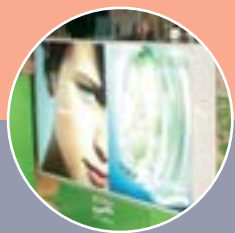
- Encapsulation with lamination films up to 250 microns thickness (10 mil)
- Encapsulation with opaque backing substrates
- Use of different type of film (finishing or texture) on top and bottom position

** Same temperature adjustment for the upper and lower heating rollers
*** Heat of the lower roller can be deactivated

Pivoting feeding tray facilitates easy loading of film rolls. Connected to a safety device installed in the machine, it provides maximum security to user while loading.



This user friendly, easy to use machine can handle extremely demanding finishing requirement of images up to a width of 108 cm (42.5 Inches) with professional accuracy.



Creative applications with Atlantic 1080

ATLANTIC 1080

Technical Specifications

Max. working width	1080 mm (42.5")
Length of the roller	1100 mm (43.7")
Diameter of the heating rollers	78 mm (3,1")
Max. thickness of print + board	25 mm (1")
Max. thickness of the film	250 microns / side (10 mil)
Adjustment and digital display of the heating rollers temperature	yes from 20 to 140°C 68°F to 285°F
Digital display of the roller pressure	yes
Upper and lower winding and unwinding spindles	yes
Number of spindles delivered with the machine	4
Maximum speed meters/min - (ft/min)	3 - (10)
Reverse operation	yes
Motor control pedal	yes
Emergency stop button	2
Stand mounted on self-locking castors	yes
Electrical print rewinding system	optional
Power of the motor (W)	100
Heating power (W)	3000
Voltage	230V / 50-60Hz single phase
Amperes	14 amps
Size of the machine on stand	L142 x D76 x H137 cm - (56"x30"x34")
Weight of the machine kg - (Lbs)	184 - (405)
Size of the shipping crate	L180 x D105 x H100 cm - (71"x42"x40")
Shipping weight kg - (Lbs)	227 - (500)
Made in France	
EC Certification	



KALA SAS - Parc de l'Ecotay
35 410 Nouvoitou - France

Tel. : +33 (0)2 99 37 64 64 - Fax : +33 (0)2 99 37 64 65
Internet : www.kala.fr - e-mail : info@kala.fr

We reserve the right to modify our models and equipments, as well as technical features without prior notice.

ATLANTIC 1650

New Hot & Cold laminator

THERMAL LAMINATION

- Use of thermal encapsulation films up to 320 microns

COLD LAMINATION




- Single side lamination with or without waste paper
- Simultaneous single side lamination and adhesive mounting
- Encapsulation with cold film in one run
- Application tape
- Colour background using colour vinyl
- Mounting onto boards up to 50 mm (2") thickness



Speed up to 6,20 m/mn (21 ft/mn)
Mounting up to 50 mm (2") thick.
Hi-capacity hot and cold laminator up to 140°C (280°F)
Working width 165 cm (65")



Specifications

 Mounting up to 50 mm (2")	 10 speed	 Diameter 23 cm (9"), film reel 100 m (110 yd)	<h3>Atlantic 1650</h3>
Maximum thickness document + board			50 mm (2")
Maximum working width			171 cm (67")
Maximum film width			165 cm (64")
Maximum length of the film reels			100 m (maximum diameter 23 cm/9")
Diameter of the rollers			maximum 120 mm (4.7")
Temperature			independant heat on top and bottom up to 140°C
Heating time from 20°C to 100°C			30 mn
Number of self blocking shaft delivered			5 + 1 unwinding shaft
Adjustable speed m/mn			from 0,3 to 6,3
Adjustable speed ft/mn			from 0,9 to 21
Power W			3600
Voltage			230 V / 50-60 Hz
Amperage			16A/230 V
Dimensions of the machine	(cm) (inch)	W 206 x D 82 x H 153 W 81" x D 32" x H 60"	
Net weight of the machine			300 kg
Shipping dimensions of the machine	(cm) (inch)	W 213 x P93 x H 170 L 84" x P 37" x H 66"	
Machine weight for shipping			370 kg
Warranty			1 year
<small>Made in France, CE certified in compliance with the Machine and the Electromagnetic Compatibility Directives CEM.</small>			✓

Roll to Roll system delivered as standard with the machine.



RoHS



www.kala.fr